

The logo for VOLON features the word "VOLON" in a bold, red, italicized sans-serif font. The text is centered between two blue, wavy horizontal bands that resemble stylized water or a ribbon. The background is white.

VOLON

WEIFANG YUCHUAN MACHINERY CO.,LTD was built in 1973,and now has more than 800 workers, it has the output capacity of one million sets of varied types and series of “VOLON” brand valve products and the “XUANFENG” brand cylinder caps of internal combustion engines。The products of surface epoxy coated medium pressure soft-sealed resilient seated gate valve 、 gate hydrant、 fire hydrant、 balancing valve 、 silent check valve and butterfly valve and etc are huge exported to Europe and America、 Middle East 、 Southeast Asia and South Africa, etc. It is the preferred in using of the water supply & drainage and the fire fighting projects in the markets of the developed countries, and it also has been generalized products in China.

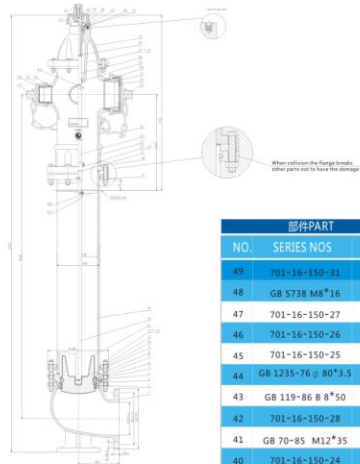




产品 Product
 Fire hydrant
 消防栓

部件PART		规格说明SPECIFICATION	
NO.	SERIES NOS	NAME	MATERIALS
26	701-16-150-17	Big Sealed gasket 大密封垫	ASTM D2000
25	701-16-150-16	Big nozzle cap 大出水帽	ASTM A536 65-45-12
24	701-16-150-29	Link 链销	STEEL
23	701-16-150-15	Up Stem 上启动杆	ASTM A574M
22	701-16-150-14	Drainpipe 出水管	ASTM A536 65-45-12
21	GB/T91-1983.2*16	Pin 开口销	Ss304
20	GB/T88-1986 B8-45	Pin axes 销轴	Ss304
19	701-16-150-13	Coupling 接头	ASTM A536 65-45-12
18	GB5783 M16*80	Bolts 螺栓	ASTM A574
17	701-16-150-12	Breakable Flange 上连接法兰	ASTM A126B
16	701-16-150-11	Flange 法兰	ASTM A536 65-45-12
15	701-16-150-10	Lower Stem 下启动杆	ASTM A574M
14	701-16-150-09	Wedge 楔板	ASTM A536 65-45-12
13	GB/T897 M16*140	Stud bolts 全丝螺柱	ASTM A574
12	GB/T6170 M16	Hex nuts 螺母	ASTM A574
11	701-16-150-08	Look ring 锁圈	Ss304
10	701-16-150-07	Lower flange 下连接法兰	ASTM A536 65-45-12
9	GB/T88-1986 B8-45	Pin axes 销轴	Ss304
8	701-16-150-06	Barnel Gasket 密封垫	ASTM D2000
7	701-16-150-05	Valve seat 阀座	ASTM A584
6	GB 1235-76 φ168*4	O-Ring O型圈	ASTM D2000
5	701-16-150-04	Main Valve Flange 连接盘	ASTM A536 65-45-12
4	701-16-150-03	screwed plug 螺堵	ASTM A584
3	GB1235-76 φ206*4.5	O-Ring O型圈	ASTM D2000
2	701-16-150-02	Seal ring 密封盘	ASTM A584
1	701-16-150-01	Hydrant Body 栓体	ASTM A536 65-45-12

NOTES:
 1 The diameter of a waterway through a connection and a valve shall be a nominal size or a specified size of 0.01 inch (0.25mm)
 2 General Tolerance as GB/T180-IT8
 3 The rate pressure is 25PSI;
 4 The nominal size of connection is accord with MPPA 1963.
 5 ALL the dimensions are given in mm.
 6 Surface Painting
 Thickness: Greater than 250mm Less than 500mm Color: RAL3020
 7 Rubber ASTM D2000 EPDM DuPont 4570



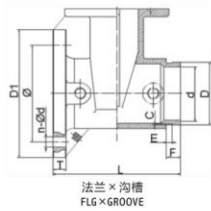
部件PART		规格说明SPECIFICATION	
NO.	SERIES NOS	NAME	MATERIALS
49	701-16-150-33	Yoke 叉架	ASTM A536 65-45-12
48	GB 5738 M8*16	Blot 六角螺栓	ASTM A574
47	701-16-150-27	Small nozzle cap 小出水帽	ASTM A536 65-45-12
46	701-16-150-26	Small sealed gasket 小密封垫	ASTM D2000
45	701-16-150-25	Small Outlet 小出水榫	ASTM B584
44	GB 1235-76 φ80*3.5	O-Ring O型圈	ASTM D2000
43	GB 119-86 8*8*50	Pin axes 圆柱销	Ss304
42	701-16-150-28	Operating Cap 检修盖	ASTM A536 65-45-12
41	GB 70-85 M12*35	Socket head bolt 内六角螺栓	
40	701-16-150-24	Stem nut 螺栓螺母	ASTM B584
39	701-16-150-23	Dustproof ring 防尘圈	ASTM D2000
38	701-16-150-22	Bush 衬套	ASTM B16-H02
37	GB 1235-76 57*3.5	O-Ring O型圈	ASTM D2000
36	GB 1235-76 44*3.5	O-Ring O型圈	ASTM D2000
35	GB1155-79 oil cup10	Oil cup 油杯	
34	701-16-150-21	Hydrant Bonnet 螺母	ASTM A536 65-45-12
33	701-16-150-20	Stop nut 限位螺母	45#
32	GB 5738 M12*55	screw 螺栓	ASTM A574
31	GB/T6170 M12	Hex nuts 螺母	ASTM A574
30	701-16-150-19	Stem 杆	Ss316
29	GB 1235-76 36*3.5	O-Ring O型圈	ASTM D2000
28	GB 1235-76 140*3.5	O-Ring O型圈	ASTM D2000
27	701-16-150-18	Big Outlet 大出水榫	ASTM A584



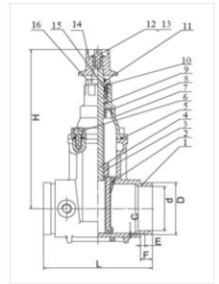
产品 Product
 AWWA C509 250PSI/300PSI
 135/138明杆沟槽式橡胶座闸阀
 135/138 Rising Stem Groove Joint Ends Resilient Wedge Gate Valve

材料清单 Materialist		规格说明 SPECIFICATION	
部件PART			
1	阀体 Valve Body	球墨铸铁 A S T M S 3 6 Ductile Iron ASTM A 536	
2	弹性楔形闸板 Resilient Wedge	球墨铸铁 A S T M S 3 6 / 三元乙丙橡胶 ASTM D2000 Ductile Iron ASTM A 536/EPDM ASTM D 2000	
3	楔形闸板螺母 Wedge Nut	青铜 ASTM B 584 UNS C83600 Bronze ASTM B 584 UNS C83600	
4	定位销 Dowel Pin	不锈钢 ASTM A276 UNS S42000 Stainless Steel ASTM A 276 UNS S42000	
5	阀杆压套 O-Ring Stem Back Seat O-Ring	三元乙丙橡胶 ASTM D 2000 EPDM ASTM D 2000	
6	闸板垫圈 Bonnet Gasket	三元乙丙橡胶 ASTM D 2000 EPDM ASTM D 2000	
7	闸盖 Bonnet	球墨铸铁 ASTM A 536 Ductile Iron ASTM A 536	
8	阀杆填料 Stem Packing	三元乙丙橡胶 ASTM D 2000 EPDM ASTM D 2000	
9	螺栓 Threaded Rod	镀锌碳钢 Carbon Steel Zinc Plated	
10	密封垫圈 Gland Bushing	青铜 ASTM B 584 Bronze ASTM B 584	
11	压盖 Gland	铸钢 ASTM B 126-B Cast Iron ASTM A 126-B	
12	压盖螺母 Gland Nut	不锈钢 18-8 Stainless Steel 18-8	
13	叉架螺栓 Yoke Screw	镀锌合金钢 ASTM A 574M Alloy Steel ASTM A 574M Zinc Plated	
14	叉架 Yoke	铸钢 ASTM A 126-B Cast Iron ASTM A 126-B	
15	叉架衬套 Yoke Bushing	青铜 ASTM B 584 Bronze ASTM B 584	
16	平头固定螺栓 Flat Point Set Screw	合金钢 ASTM F912M 黑氧化 Alloy Steel ASTM F 912M Black Oxide	
17	叉架衬套固定器 Yoke Bushing Retainer	铸钢 ASTM A126-B Cast Iron ASTM A 126-B	
18	手轮 Handwheel	球墨铸铁 ASTM A 536 Ductile Iron ASTM A 536	
19	手轮螺母 Handwheel Nut	镀锌碳钢 Carbon Steel Zinc Plated	
20	平头固定螺栓 Flat Point Set Screw	镀锌碳钢 Carbon Steel Zinc Plated	
21	阀杆 Stem	青铜 ASTM B 150 UNS C61400 Bronze ASTM B 150 UNS C61400	
22	闸盖螺栓 Bonnet Screw	镀锌合金钢 ASTM A 574M Alloy Steel ASTM A 574M Zinc Plated	

- 螺栓闸盖 弹性楔形闸板 沟槽 法兰口 沟槽
- 250 PSI/300 PSI/17.2 Bar 非冲击性冷工作压力
- 符合 AWWA C 509 标准
- Bolted Bonnet-Non-Rising Stem-Resilient Wedge-Flanged "Groove-Groove" Groove
- 250 PSI/300 PSI/17.2 Bar Non-Shock Cold Working Pressure
- CONFORMS TO AWWA C 509.



*根据美国自来水厂协会 AWWA C-550 标准的静电应用熔断内外环氧树脂安全涂敷。
 *Electrostatically applied fusion-bonded epoxy coated inside and outside per AWWA-550.



法兰 × 沟槽 FLG × GROOVE
 冰冻气候预防措施：在测试管道系统后，阀门应处于开启状态，使得完全排泄能够进行。
 FREEZING WEATHER PRECAUTION: Subsequent to testing a piping system, gate valve should be in an open position to allow complete drainage.

尺寸-重量-数量 DIMENSION - WEIGHTS - QUANTITIES		尺寸																									
通径 Size	L	H 开启 H Open	C		D		E		F		G		d	D1	T	螺栓圆周 Bolt Circle	法兰孔距 Flange Turns To Open										
			英寸 in	毫米 mm	英寸 in	毫米 mm	英寸 in	毫米 mm	英寸 in	毫米 mm	英寸 in	毫米 mm						英寸 in	毫米 mm								
1	80	8.0	203	20.3	510	15.9	405	0.08	2	3.50	89	0.35	9	0.98	25	10.00	254	3.0	73	7.5	191	0.75	19	6.00	152.3	4-019	10.5
4	100	9.0	229	22.4	568	16.6	422	0.08	2	4.49	114	0.35	9	0.98	25	10.0	254	4.0	100	9.0	229	0.94	24	7.05	190.5	8-019	13.75
6	150	10.5	267	30.3	769	22.9	581	0.08	2	6.61	168	0.35	9	0.98	25	12.4	315	6.0	150	11.0	279	1.00	254	9.40	241	8-023	16
8	200	11.5	292	37.8	960	28.5	724	0.09	2.3	8.62	219	0.4	12	1.22	31	14.76	375	8.0	200	13.5	343	1.13	288	11.7	298.5	8-023	17.5
10	250	13	330	45.1	1114	35.1	891	0.1	2.5	10.7	272	0.5	13.2	1.22	31.7	16.38	416	10	250	15.88	406	1.19	302	14.25	362	10-026	23.5
12	300	14	356	52.4	1331	40.2	1029	0.11	3.3	12.7	324	0.5	13.2	1.25	31.7	17.52	445	12	300	19.2	483	1.25	318	17.01	432	12-026	26