



**GINA**

GEOGRAPHIC  
INFORMATION  
ASSISTANT

FIRE FIGHTERS  
INTERVENTION  
SYSTEM



**3** years in terrain

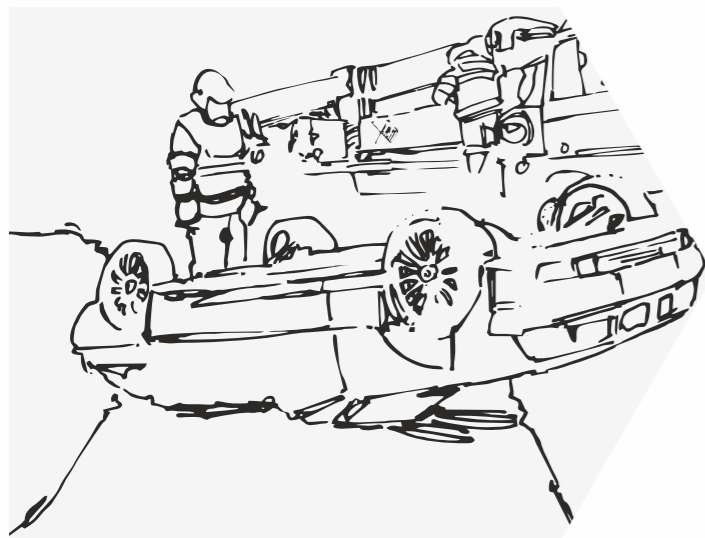
Designed in cooperation with fire fighters

Faster arrival in **30%** of events



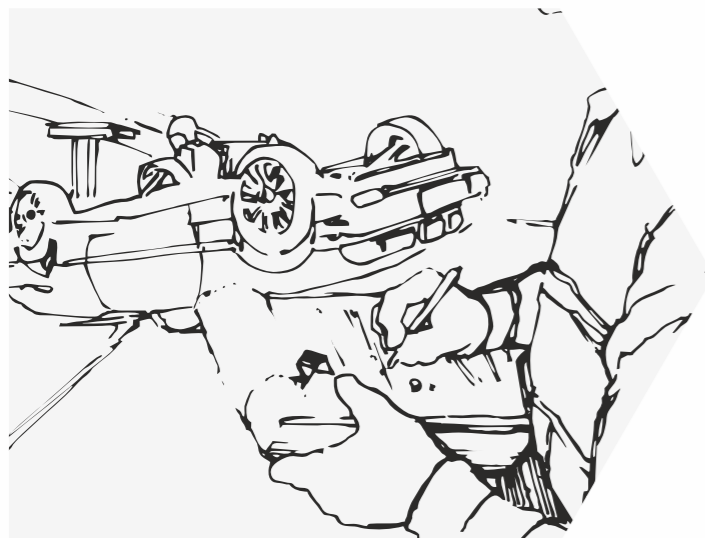
## ON THE ROAD

- ▶ Simple receiving of command documents
- ▶ Status dispatching with confirmation
- ▶ Statuses not dependent on radio signal
- ▶ Shared view of all unit's location
- ▶ Offline turn-by-turn navigation
- ▶ Current traffic capacity to the event location
- ▶ Possibility to call the announcer of the event



## INTERVENTION

- ▶ Mutual coordination of the unit's arrival
- ▶ Possibility to take, store and transmit the photos
- ▶ Sharing and projection of the situational view (map drawings)
- ▶ Projection of the water sources
- ▶ Access to the external applications (car rescue, dangerous substances etc.)
- ▶ Access to the evacuation documents



## POST INTERVENTION

- ▶ Photograph archive
- ▶ Projection of the actual trail taken to the event location
- ▶ Customizable data store according to each unit's needs
- ▶ Configurable phone list and documentation synchronized with all devices
- ▶ History of the command documents



Status: ● On the road ● Intervention ● Others

- |  |  |  |
|--|--|--|
| <p><b>1</b> Command documents - real-time information transmission directly to the vehicle</p> <p><b>2</b> Scrolling in command documents</p> <p><b>3</b> Navigation to the event location</p> | <p><b>4</b> 3D turn-by-turn navigation</p> <p><b>5</b> Shared location of all units with the possibility to choose a suitable map</p> <p><b>6</b> Intervention spot with the projection of water sources</p> | <p><b>7</b> Data store - evacuation documents, phone list, databases (dangerous substances, car rescue)</p> <p><b>8</b> Possibility to share the taken photograph in real time with all units</p> <p><b>9</b> Status dispatching</p> |
|--|--|--|

## MAP PORTFOLIO

Satellite map, open street map, cadastral map, external maps



# TECHNOLOGY

**OS:** Android, iOS, Windows

**Navigation:** Sygic with emergency maps (offline turn-by-turn navigation)

**Security:** SSL channel (AES 256-bit approved for TOP SECRET information by NSA), ISO27001 infrastructure, location data are sent only while intervention, possibility to use kiosk module (sole run of the application)

**Communication:** Telephone network (GSM module). Software is optimized for low data throughput (GPRS). In case of connection loss the device is using offline navigation and maps stored in the device. Possibility to use Wi-Fi or other available networks.

**Data Storage:** Evacuation documentation, phone list, car rescue database, dangerous substances database, public notices and other useful documentation – all remotely controllable (configuration is shared with all devices).

Note: Launching the third party programs is dependent on the license ownership.

**Integration:** Route closures, traffic capacity, external maps, map layers (water sources, firing, shared operational view). Support of the current tablet displays, GPS devices (own locators, GINA locators and third party locators) and special GPS devices (satellite locators) including the status interchange between these systems.

**Recommended device:** 10" tablet with 1280x800 resolution, 3G module, GPS, camera and 16 GB micro SD card



## PROCESS OF DEPLOYMENT

- 1) Arrange a meeting with our representative
- 2) Specify your needs
- 3) Table a proposal

## WHAT DOES GINA CONSIST OF?

**Intervention SW** – one license can be used for more vehicles

**Web access for the overview** of all unit's location

**Web access for the data** store configuration

## QUESTIONS AND APPOINTMENTS

### Zbyněk Pouliček

Managing director  
+420 773 837 290  
poulicek@ginasystem.com

[www.ginasystem.com](http://www.ginasystem.com)

The control elements layout as well as the GINA system itself is an intellectual property of GINA Software s.r.o.